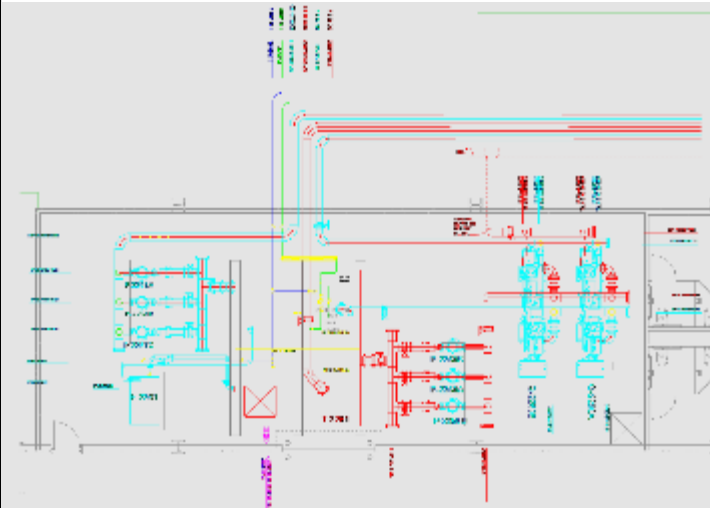


Phase II: To Be Built

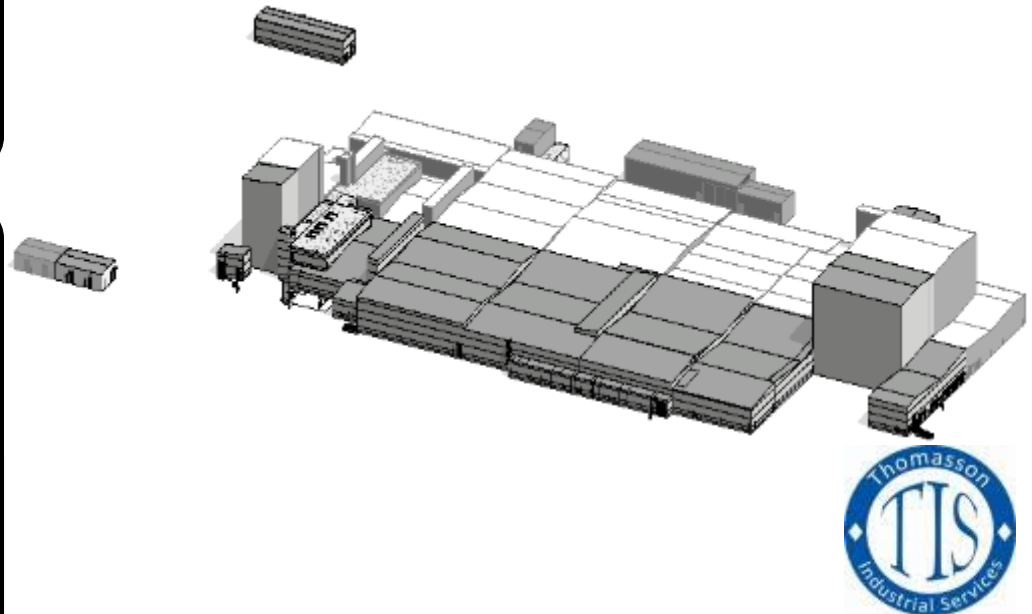
Manufacturing Plant Phase II

- Owner's Representative for the Phase 2 Expansion Design-Build Contract
- Size: Approx. 1,000,000 SF
- Planning & Bid Documentation
- Cost Planning and project budgeting services including
 - Schematic Design and Design Development
 - Estimating (Including Final Budget)
 - Value Engineering
 - Master Project Schedule





One of the big solutions provided by the team was life safety egress analysis and design. This service saved over \$1m in additional costs.





Contact TIS for More Details

Hardeman "Hardy" Seaborn, PE, PMP

Executive Director

Thomasson Industrial Services

Office: (615) 346-3456

Mobile: (615) 838-0636

Email: hseaborn@icthomasson.com

Stephen L. Gibson, PE, CSCP, PMP

Managing Director / Director of Industrial Systems Engineering

Thomasson Industrial Services

Office: (615) 346-3565

Mobile: (615) 417-0222

Email: sgibson@icthomasson.com